



C-HOOKS

Coil hook coil lifters or commonly known as “C-Hooks” are below-the-hook lifting devices that attach to crane hooks designed for both industrial and heavy duty environments.

C-Hooks are equipped with a lifting bail, counterweights and a ram (coil loading area) with a rounded surface to balance and carry the load to ensure proper handling & lift balance. Carney Fabricating can manufacture & certify c-hooks to lift up to 50 tons/tonnes that maintain your headroom lifting requirements.

GET IN TOUCH

info@carneyfabricating.com
www.carneyfabricating.com

Tel: 1.905.564.0303
Toll free: 1.866.THE.BULL

2A - 14 Reagan Road
Brampton Ontario L7A 1B9

C-Hooks

Engineered for Strength, Durability & Performance

Carney Fabricating c-hooks are engineered, designed and manufactured according to ASME B30.20 and ASME BTH-1 design standards for below-the-hook lifting devices to ensure industry standard quality, durability and performance.

Carney Fabricating sources the best North American high tensile strength traceable alloy steel for various applications. Designed to be balanced when loaded or unloaded you can be confident that regardless of your environment, number of load cycles and product requirements our C-hooks are designed for the task.

All of our c-hooks and coil lifters are painted safety-yellow with contrasting labels & identifiers such as: maximum rated load capacity, handles, name plates, centre-of-gravity (COG) indicators and warning labels. If desired, we can also provide zebra strips for high visibility environments.

Product Highlight (Roll Lifting Beam)

Another form of coil lifting is combining our c-hook engineering designs with lifting beam designs into a roll lifting beam. This lifter can be actuated using a handwheel or motor drive to adjust the load pins in and out, engaging the coil ID (inner diameter). By using standard modular components we can provide a hybrid standard lifter matching the right product for the right application.

ROLL LIFTING BEAM FEATURES

- Adjustable arms equipped with high grad heat-treated alloy steel material load carrying pins with high KSI values for added strength
- Manual handwheel, hand-chain or motorized options available
- Motorized with slip-clutch protection to protect motor and gears
- Can be equipped with handles, warning beacons and wireless controls.
- Load measuring and other smart technologies can be integrated upon request.

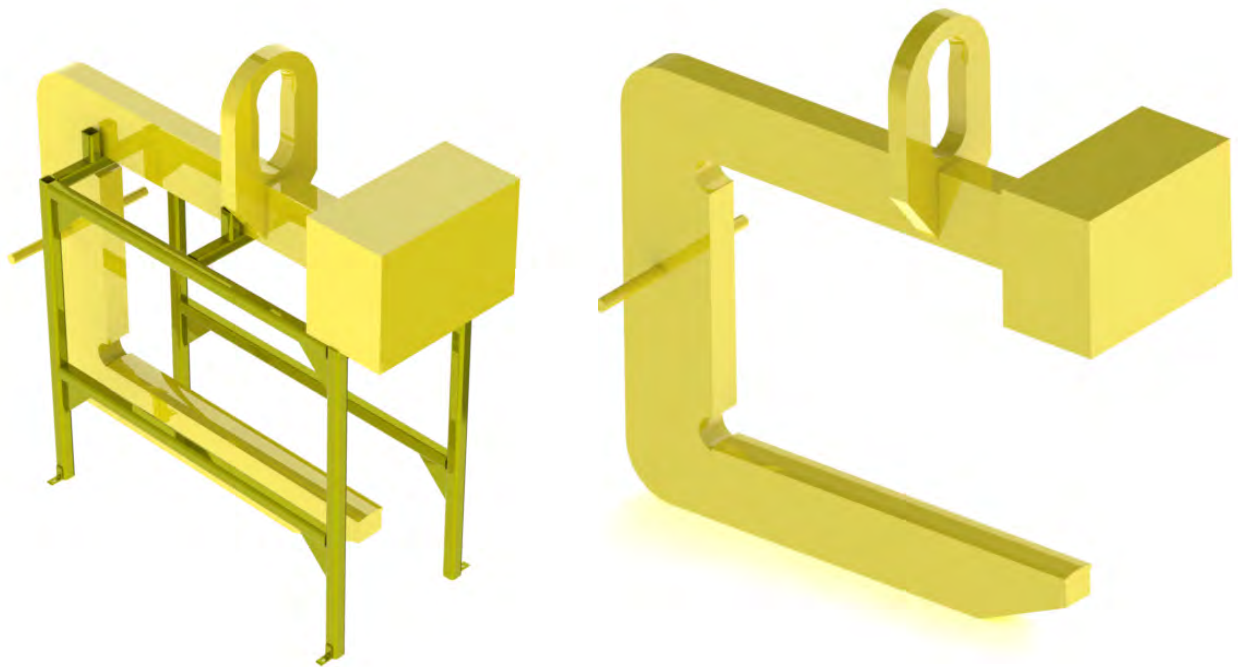


C-Hooks

Lifting Applications

Some traditional lifting applications include the handling of steel in steel processing plants, steel stamping plants, steel warehousing facilities, automotive plants and other applications for lifting coiled steel.

Some other types of lifting applications where a C-hook can be used include lifting other coiled steel like rebar, electrical reeled cables, spools of wire, paper products, culverts and pipe

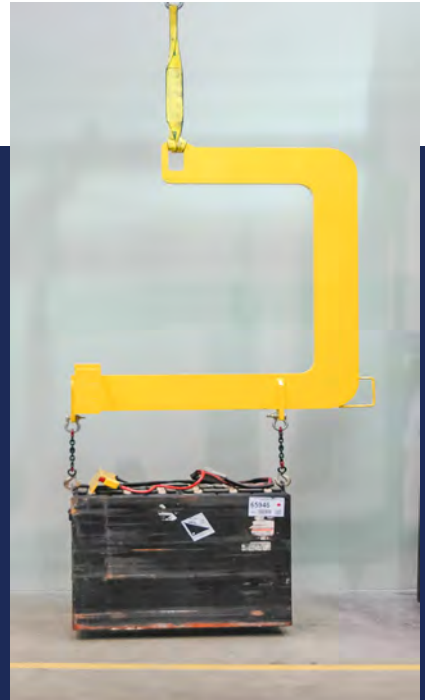




C-hook without counterweights



We offer c-hooks up to 50 tons (100,000 lbs) capacity, with or without parking stands



C-hooks for lifting other loads and to machine load items such as forklift batteries and stamping dies

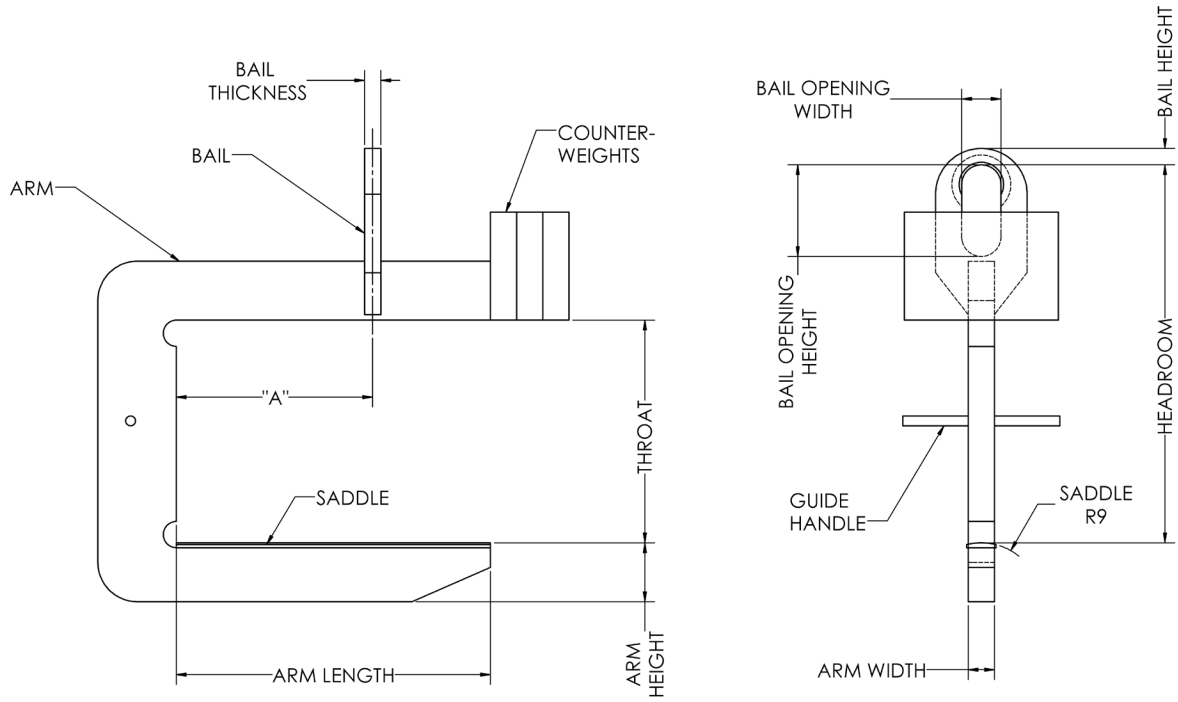
Key Features

- Standard capacities up to 50 tons / tonnes (higher capacities please call)
- With or without counter balances depending on maximum rated load or capacities
- High tensile alloy grade heat treated material with high yield values minimizes physical size.
- Handle bars / grips
- Inside bail shape to match crane hook shape

Product Options

- P.Eng stamped drawing upon request
- Parking stand
- High visibility painted zebra stripes
- Polyurethane buffers to protect coil face
- Level indicators
- Smart technologies
- Ram coil retainer cap
- C-hooks for narrow or small coil widths available

Product Specs



GENERAL SPECIFICATIONS

Maximum Lift Capacity	50 Tons
<i>Custom Units Available</i>	

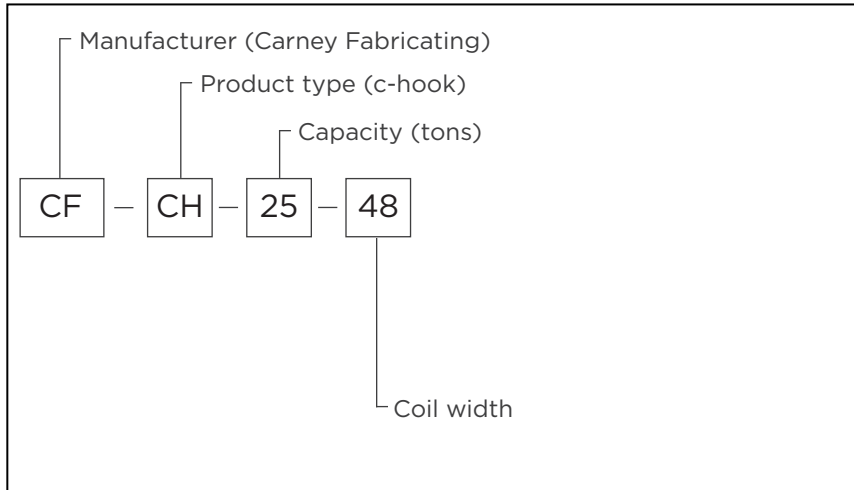
Product Specs

COUNTERWEIGHTED COIL HOOK CONFIGURATIONS				
Model No.	Capacity (Tons)	Max Coil Width (in)	Throat Height (in)	Approx. Weight
CF-CH-6-30	3	30	24	339
CF-CH-6-36	3	36	24	363
CF-CH-6-48	3	48	24	501
CF-CH-10-24	5	24	24	352
CF-CH-10-30	5	30	24	414
CF-CH-10-36	5	36	24	525
CF-CH-10-48	5	48	24	789
CFCH-10-54	5	54	24	900
CF-CH-10-60	5	60	24	950
CF-CH-15-36	7 1/2	36	24	757
CF-CH-15-48	7 1/2	48	24	1063
CF-CH-15-54	7 1/2	54	24	1223
CF-CH-15-60	7 1/2	60	24	1362
CF-CH-20-36	10	36	24	884
CF-CH-20-48	10	48	24	1234
CF-CH-20-54	10	54	24	1388
CF-CH-20-60	10	60	24	1552
CF-CH-30-36	15	48	30	1602
CF-CH-30-48	15	48	30	1602
CF-CH-30-54	15	54	30	2091
CF-CH-30-60	15	60	33	2248
CF-CH-30-72	15	72	33	2920
CF-CH-40-48	20	48	34	2413
CF-CH-40-54	20	54	34	2646
CF-CH-40-60	20	60	32	2823
CF-CH-40-72	20	72	30	3641
CF-CH-25-48	25	48	58	1600
CF-CH-60-60	30	60	38	4394
CF-CH-60-72	30	72	34	5694
CF-CH-60-84	30	84	34	6702

For use with very high speed hoists, additional impact factors may be desirable. Please contact for custom fabricating quote.

Model/Part Number Breakdown

Example: CF-CH-25-48



C-hook in operation at customer facility



Twenty-five ton c-hook in production before paint

GET IN TOUCH

info@carneyfabricating.com
www.carneyfabricating.com

Tel: 1.905.564.0303
Toll free: 1.866.THE.BULL

2A - 14 Reagan Road
Brampton Ontario L7A 1B9

Due to continuous product improvements, specifications are subject to change without notice. Some systems and features shown may be optional at extra cost.

CF_CH_NA_R008