



MARINE GRADE SPREADER BEAM

A spreader beam is a below-the-hook lifting device that allows the upper rigging equipment to spread between to points of lift with extra stability and rigging equipment below the beam.

Marine-Construction Grade Adjustable Spreader Beams are one of heaviest duty engineered below-the-hook lifting device products that Carney Fabricating has designed. This engineered product is ideal for application with construction cranes that allows for both small and very wide lifting spans and can even be used in some cantilevering below the hook lifting applications with a counter weight (also known as cantilevered lifting or spreader beams with the use of a counter balance).

GET IN TOUCH

info@carneyfabricating.com
www.carneyfabricating.com

Tel: 1.905.564.0303
Toll free: 1.866.THE.BULL

2A - 14 Reagan Road
Brampton Ontario L7A 1B9

Marine Grade Spreader Beam

What is A Spreader Beam?

A spreader beam is a below-the-hook lifting device that allows the upper rigging equipment to spread between two points of lift with extra stability and rigging equipment below the beam.

Most spreader beams are comprised of three main components that make up a spreader beam. One is the sling that is used above the beam material, the second is the beam and the third part is the rigging points on the ends of the beam such as plates with holes to allow for shackles and slings to be added to the ends of the beam for vertical lifting. Another way of understanding a spreader beam is that the beam maintains a spread between the ends of the legs of a sling.

The beam portion of the spreader beam spreads out the load carrying of the carrying legs of the sling and maintains a certain angle of the sling and distance apart.

There are two forces associated with spreader beams. One is tension on the legs of the chain sling at an angle and the second is compressional forces toward the middle or midpoint of the beam.

Lifting Applications

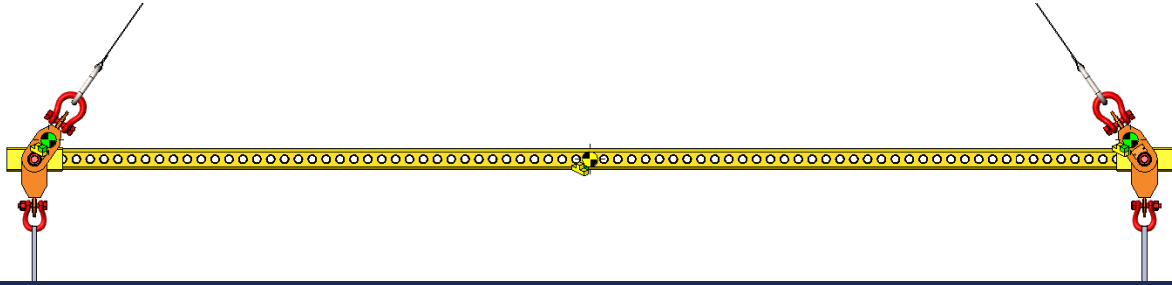
Some industry applications this beam is suitable for include heavy duty construction, bridge building, aerospace manufacturing, rail rescue recovery & fabricating long or wide loads.

Our spreader beams are built for adverse weather conditions and suitable for varying environmental conditions like harsh winds as well as ocean and coastal conditions.

Fabrication & Finishing

To ensure the product is safe to handle and use all sharp edges are removed, welds are made in accordance with AWS D1.1 and visually inspected and ultrasonically tested.

For operation in the harshest environments, all exposed and untreated surfaces are Zinc metallized as a standard which protects the product in these harsh environments.



This application shows how a luffing crane on a high rise construction is placing façade wall panel sections into place using the spreader beam configured as a cantilevered spreader beam with a counter weight on the end closest to the crane and the load on the other end.

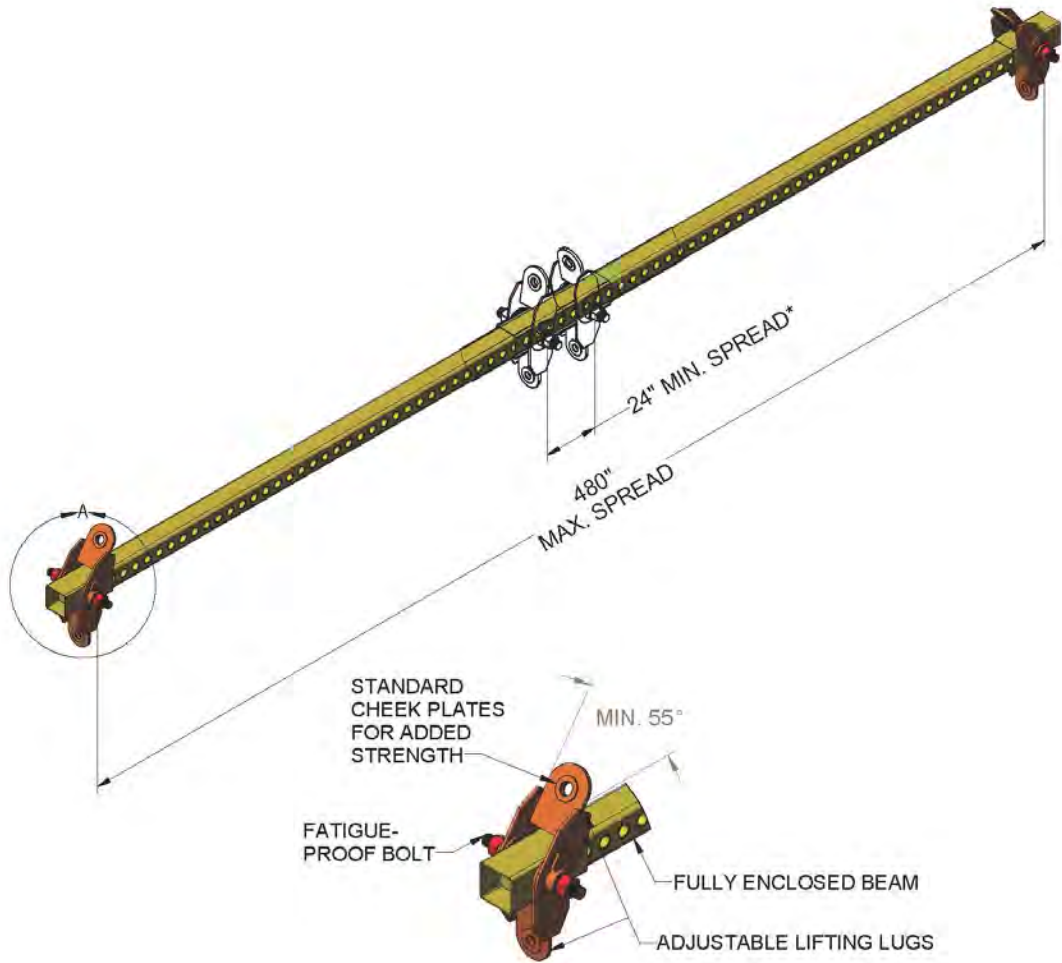
Key Features

- Enable the lifting and transport of wide loads by a crane
- Adjustable design, making them an ideal choice for many different applications
- Lightweight, and easy to install and use
- Great for lifting wide loads requiring stability
- Distributes loads effectively keeping them balanced
- Reduced risk of load sliding, bending or crushing

Product Options

- Fixed spread economy spreader beam
- Adjustable span spreader beam
- Two point spreader beam
- Three point spreader beam
- Fixed spreader beam
- Custom spreader beams with more pick points

Product Specs

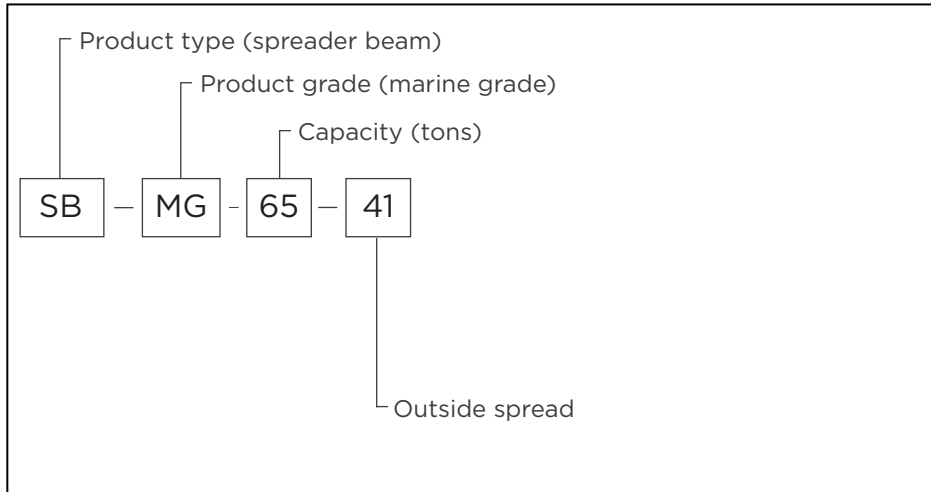


GENERAL SPECIFICATIONS	
Maximum Lift Capacity	65 Tons
Custom Units Available	

CAPACITY (Tons)	MODEL	Outside Max Spread (ft)	Minimum Spread (ft)	Headroom (in)	Self Weight (lbs)
65	SB-MG-65T-41	40	2	60.5	4361

Model/Part Number Breakdown

Example: SB-MG-65-41



GET IN TOUCH

info@carneyfabricating.com
www.carneyfabricating.com

Tel: 1.905.564.0303
Toll free: 1.866.THE.BULL

2A - 14 Reagan Road
Brampton Ontario L7A 1B9

Due to continuous product improvements, specifications are subject to change without notice. Some systems and features shown may be optional at extra cost.

CF_MGSB_NA_R002